



# CRV Practice targets



1302 - 1411

Holland island house | Chesapeake bay, USA | past, October 2009

## Notes:

Dan

good effort although with CRV we don't use templates - the idea of CRV is that writing all the page numbers, stage numbers and so on distracts the mind from guessing whilst you work through the process. So next time please try without the TRV templates.

Overall you did seem to be picking up on a manmade structure and a wet location within your data so well done for this effort - some good start data in there.

Some very strong early Aols. of 911 and twin towers did i am afraid slightly hinder the session - but don't worry we all have gone through this and still do, it gets better with time/practice.

All the best...

Daz

[Click here for a link to the CRV Mentoring forums](#)



# CRV Practice targets

Additional info and feedback:

[http://en.wikipedia.org/wiki/File:Holland\\_Island\\_house.jpg](http://en.wikipedia.org/wiki/File:Holland_Island_house.jpg)

[http://en.wikipedia.org/wiki/Holland\\_Island](http://en.wikipedia.org/wiki/Holland_Island)

[Click here for a link to the CRV Mentoring forums](#)



Name Dan Sullat

Date 2/2/14

Time 6:20 pm

**Stage 1 of the Site (Ideogram - 2 seconds!)**

Write Target Reference Numbers:

1302

1411

Go!  
➡



**Stage 2 of the Site** - In each category, list as many sensory descriptor words that enter awareness

Textures: fuzzy smooth hard soft

AOLs?

Colors: dark grey white Black yellow smoke  
red green

Smells:

Tastes:

Temperatures: normal warm

Sounds: urban distant voice

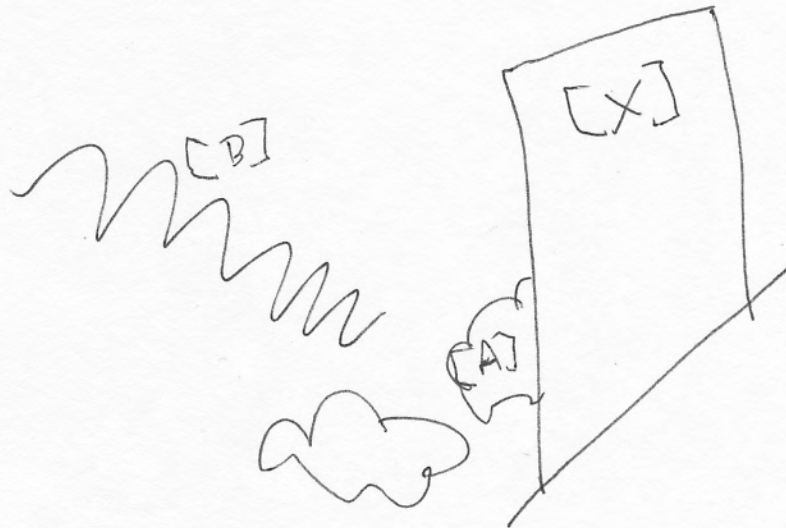
Dimensions - minimum of 4 (including Motion and Density descriptors):

Hollow porous gelatinous large upright straight

Aesthetic Impact (AI) - 1 word only (How would the site make you feel if you were physically there?):

calm curious interested

Stage 3 of the Site (Freehand Sketch - 15 seconds!)



AOLs?

**Stage 1 of [x]**

(Read the following prompt and produce a new ideogram)

**"From the top of [x] something should be perceivable"**

Dark open tall flat  
Smoky High.



**Stage 2 of [x]** (Again, all of the sensory words that enter awareness)

Textures: flat Hard pebbly smooth

Colors: grey Beige

Smells:



Tastes:

Temperatures: warm

Sounds: distant cacophony

Dimensions (minimum of 4): tall large hollow straight symmetrical  
mathematically perfect

Aesthetic Impact (AI):

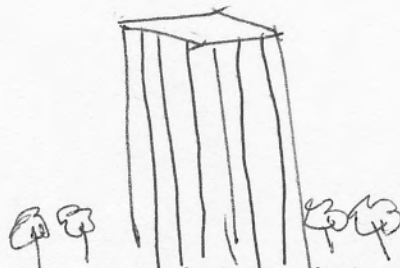
Impressed

AOLs?

9/11  
twin towers

skyscrapers

**Stage 3 of [x]** (Analytical Sketch - render each Stage 2 Dimension word in line form)



Now, add any spontaneous archetypes that you feel should be included in your sketch

SENSORY  
**S**

DIMENSIONS  
**D**

AESTHETICS  
**A**  
(Yours)

EMOTIONS  
**EI**  
(Theirs)

TANGIBLES  
**T**

INTANGIBLES  
**I**

OVERLAY  
**AOL**

ANALOGY  
**AOL/S**

Tall

straight

Tall

man-made

Impressive



Hollow

Twin  
Towers

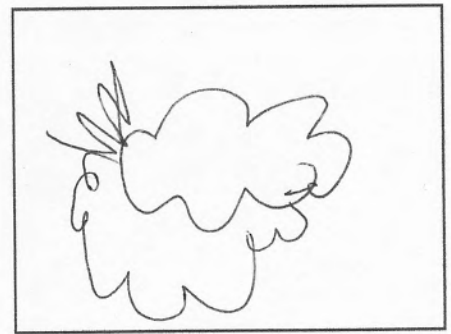
(Data entries past this approximate point on the page cannot be trusted)

Stage 1 of [A]

(Read the following prompt and produce a new ideogram)

"From the top of [A] something should be perceivable"

unstable slippery gelatinous  
translucent permeable



Stage 2 of [A] (Again, all of the sensory words that enter awareness)

Textures: slimy slippery gooey  
Colors: greyish greenish brownish  
Smells:  
Tastes:

AOLs?

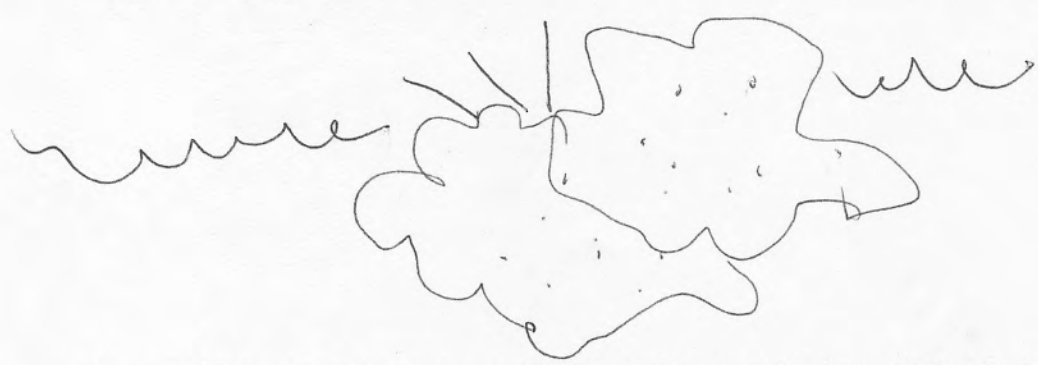
Temperatures: cool

Sounds: squish

Dimensions (minimum of 4): solid small permeable organic

Aesthetic Impact (AI): wavy blobby  
get away, not good, not welcome, doesn't belong

Stage 3 of [B] (Analytical Sketch - render each Stage 2 Dimension word in line form)



Now, add any spontaneous archetypes that you feel should be included in your sketch

SENSORY  
**S**

DIMENSIONS  
**D**

AESTHETICS  
**A**  
(Yours)

EMOTIONS  
**EI**  
(Theirs)

TANGIBLES  
**T**

INTANGIBLES  
**I**

OVERLAY  
**AOL**

ANALOGY  
**AOL/S**

wet

Submerged

slimy

gross

small

Bloppy



yuck

(Data entries past this approximate point on the page cannot be trusted)

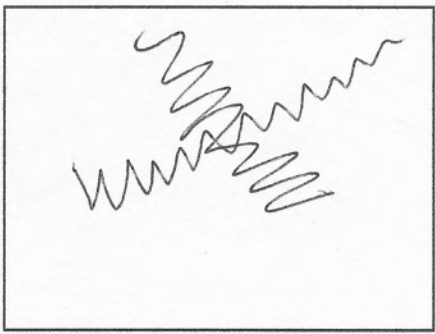


**Stage 1 of [B]**

(Read the following prompt and produce a new ideogram)

**"From the top of [B] something should be perceivable"**

energy pulse  
moving out away



**Stage 2 of [B]** (Again, all of the sensory words that enter awareness)



Textures:

Colors:

Smells:

Tastes:

Temperatures:

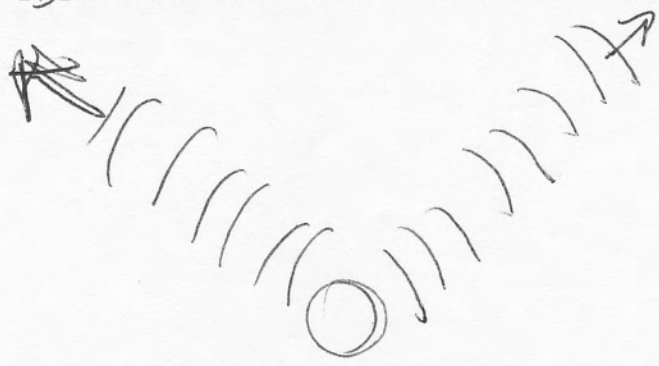
Sounds: crack, Buzz

Dimensions (minimum of 4): hollow moving outward wide large

Aesthetic Impact (AI): empty  
watch out

AOLs?

**Stage 3 of [B]** (Analytical Sketch - render each Stage 2 Dimension word in line form)



Now, add any spontaneous archetypes that you feel should be included in your sketch

SENSORY  
**S**

DIMENSIONS  
**D**

AESTHETICS  
**A**  
*(Yours)*

EMOTIONS  
**EI**  
*(Theirs)*

TANGIBLES  
**T**

INTANGIBLES  
**I**

OVERLAY  
**AOL**

ANALOGY  
**AOL/S**

loud

Harmful

widening

warning



(Data entries past this approximate point on the page cannot be trusted)

---

# Site Template

(Combine all of your Analytical Sketches into a single composite sketch)

energy pulse  
moving out away  
crack  
Buzz  
hollow  
empty  
moving outward  
wide  
large  
watch out

[B]

[X]

Immersive  
tall  
large  
hollow  
straight  
symmetrical  
mathematically perfect  
distant cacophony [B]

[A]

[A]

Slimy  
Slippery  
gooey  
greyish  
greenish  
brownish  
cool  
squish

solid  
permeable  
organic  
wavy  
blobby  
get away  
not good  
not welcome  
doesn't belong

Finally, insert all of the AI, EI, T, and I words from each Stage 4 page into the Site Template at their respective points